

2 FREE MASONRY WEBINARS PRESENTED BY INDUSTRY EXPERTS

TO REGISTER - EMAIL
jboyer@midatlanticmasonryassociation.org
FOR MORE INFORMATION VISIT
MIDATLANTICMASONRYASSOCIATION.ORG



■ THURS., NOV. 3, 2022 - 1PM–2PM ET

MASONRY STRUCTURAL DESIGN TIPS (1 AIA/CES LU HSW | 0.1 ICC CEU)

By W. Mark McGinley, Ph.D, PE, FASTM - *Professor and Endowed Chair for Infrastructure Research, Civil and Environmental Engineering, J.B. Speed School of Engineering University of Louisville*

The webinar will highlight how to design masonry walls to resist typical loading, with a focus on out-of-plane behavior. How openings influence out of plane and in-plane load distribution will also be discussed. Also addressed are the factors that can influence the walls resistance and design choices that can minimize costs.

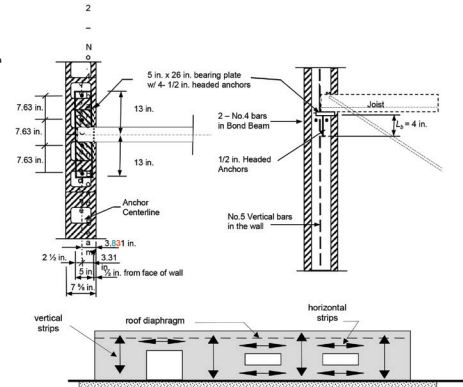
■ THURS., DEC. 8, 2022 - 11AM–NOON ET

IMPACT OF CONSTRUCTION TYPE ON INITIAL COST AND ONGOING BUILDING INSURANCE BASED ON INDEPENDENT STUDY OF MULTI-RESIDENTIAL STRUCTURES

(1 AIA/CES LU HSW | 0.1 ICC CEU)

By Walter G. M. Schneider III, Ph.D., P.E., CBO, MCP, CFO, MiFireE, FASCE

This presentation looks at building type as it relates to fire safe and resilient construction referencing the three systems of determination: International Building Code, National Fire Protection Association, and Insurance Services Office and the significant differences between them. Examples of multi-residential fires and the fire-fighting of these structures will be highlighted along with discussion of appropriate structure design to mitigate. The results of an independent study of multi-residential construction methods, including multiple systems utilizing cementitious-based materials, light steel frame, and light wood frame will be reviewed. The study evaluates the cost of construction, builders' risk insurance and evaluates the anticipated cost of building insurance based on the building construction type use.





2 FREE
MASONRY WEBINARS!

**November 3rd &
December 8th 2022**

TO SIGN UP - EMAIL
jboyer@midatlanticmasonryassociation.org
SEE THE **MAMA WEBSITE** FOR MORE INFORMATION

PO Box 4
Lebanon, PA 17042
717-273-8970
jboyer@midatlanticmasonryassociation.org

Return Service Requested

Visit **midatlanticmasonryassociation.org**
for the current list of quality MAMA members.

The Mid-Atlantic Masonry Association is an affiliate of the Pennsylvania Concrete Masonry Association. Information about education opportunities, local publications, and more is available on the website.

MAMA and its members provide Education Credits for architects and engineers.